

AS, CU, EA, GS, KU

Технические характеристики

По вопросам продаж и поддержки обращайтесь:

Алматы (7273)495-231	Казань (843)206-01-48	Новокузнецк (3843)20-46-81	Смоленск (4812)29-41-54
Архангельск (8182)63-90-72	Калининград (4012)72-03-81	Новосибирск (383)227-86-73	Сочи (862)225-72-31
Астрахань (8512)99-46-04	Калуга (4842)92-23-67	Омск (3812)21-46-40	Ставрополь (8652)20-65-13
Барнаул (3852)73-04-60	Кемерово (3842)65-04-62	Орел (4862)44-53-42	Сургут (3462)77-98-35
Белгород (4722)40-23-64	Киров (8332)68-02-04	Оренбург (3532)37-68-04	Тверь (4822)63-31-35
Брянск (4832)59-03-52	Краснодар (861)203-40-90	Пенза (8412)22-31-16	Томск (3822)98-41-53
Владивосток (423)249-28-31	Красноярск (391)204-63-61	Пермь (342)205-81-47	Тула (4872)74-02-29
Волгоград (844)278-03-48	Курск (4712)77-13-04	Ростов-на-Дону (863)308-18-15	Тюмень (3452)66-21-18
Вологда (8172)26-41-59	Липецк (4742)52-20-81	Рязань (4912)46-61-64	Ульяновск (8422)24-23-59
Воронеж (473)204-51-73	Магнитогорск (3519)55-03-13	Самара (846)206-03-16	Уфа (347)229-48-12
Екатеринбург (343)384-55-89	Москва (495)268-04-70	Санкт-Петербург (812)309-46-40	Хабаровск (4212)92-98-04
Иваново (4932)77-34-06	Мурманск (8152)59-64-93	Саратов (845)249-38-78	Челябинск (351)202-03-61
Ижевск (3412)26-03-58	Набережные Челны (8552)20-53-41	Севастополь (8692)22-31-93	Череповец (8202)49-02-64
Иркутск (395)279-98-46	Нижний Новгород (831)429-08-12	Симферополь (3652)67-13-56	Ярославль (4852)69-52-93
Россия (495)268-04-70	Киргизия (996)312-96-26-47	Казахстан (7172)727-132	



Qualität von Anfang an.

Technische Daten

BAUFORM

Edelstahl-Schmutzfänger mit 2-teiliger Körperkonstruktion (verschraubt).

ANSCHLUSS

Flansch:

DN15 ... DN300, PN16 gebohrt.
Flansche PN16, DN65 werden in 4-Loch-Ausführung geliefert!
Baulänge nach EN 558-1 Reihe 1.

EINBAULAGE

Beliebig, vorzugsweise für waagerechten oder senkrechten Einbau.
Durchflussrichtung beachten.

NENNDRUCK

Flanschausführung:
PN16

TEMPERATURBEREICH

-20°C ... +180°C

WERKSTOFFE

Gehäuse: Edelstahl 1.4408
Sieb: Edelstahl 1.4401
Dichtung: PTFE

MASCHENWEITE

Flanschausführung:
0,6 mm : Normalsieb
0,25 mm : Feinsieb

Alle Angaben sind freibleibend und unverbindlich!

Specification

DESIGN

Strainer made of stainless steel.
Body consists of two screwed parts.

CONNECTION

Flanged connection:

DN15 ... DN300, PN16 drilled.
Flange PN16, DN65 will be delivered in 4-hole execution!
Face to face according to EN 558-1 R1.

MOUNTING POSITION

As desired, preferably for horizontal or vertical mounting.
Please refer to flow direction.

NOMINAL PRESSURE

Flanged connection:
PN16

TEMPERATURE RANGE

-20°C ... +180°C

MATERIAL

Body: Stainless steel 1.4408
Mesh: Stainless steel 1.4401
Sealing: PTFE

MESH

Flanged connection:
0,6 mm : screen standard
0,25 mm : screen fine

The above information is intended for guidance only and the company reserves the right to change any data herein without prior notice!

Artikel:
AS

Schmutzfänger
PN16

Edelstahl



Type:
AS

Strainer
PN16

Stainless Steel



Artikel- u. Bestellangaben: z.B. **AS300007**

= Schmutzfänger, Edelstahl, Maschenweite = 0,60 mm, DN 50

1.+ 2. Stelle Produkt	3.+ 4. Stelle Werkstoffe Gehäuse	5. Stelle Zusatzausstattung	6. Stelle Maschenweite	7.+ 8. Stelle Anschlußgröße
AS = Schmutzfänger	30 = Edelstahl 1.4408	0 = ohne	0 = 0,60 mm 1 = 0,25 mm (fein)	Flansch- anschluß 02 = DN 15 03 = DN 20 04 = DN 25 05 = DN 32 06 = DN 40 07 = DN 50 08 = DN 65 09 = DN 80 10 = DN 100 11 = DN 125 12 = DN 150 13 = DN 200 14 = DN 250 15 = DN 300

Ordering example: e.G. **AS300007**

= Strainer, Stainless steel, Mesh = 0,60 mm, DN 50

1.+ 2. Digit Product	3.+ 4. Digit Material body	5. Digit Options	6. Digit Mesh	7.+ 8. Digit Connection size
AS = Strainer	30 = stainl. steel 1.4408	0 = without	0 = 0,60 mm 1 = 0,25 mm (fine)	flanged connection 02 = DN 15 03 = DN 20 04 = DN 25 05 = DN 32 06 = DN 40 07 = DN 50 08 = DN 65 09 = DN 80 10 = DN 100 11 = DN 125 12 = DN 150 13 = DN 200 14 = DN 250 15 = DN 300

Hinweis

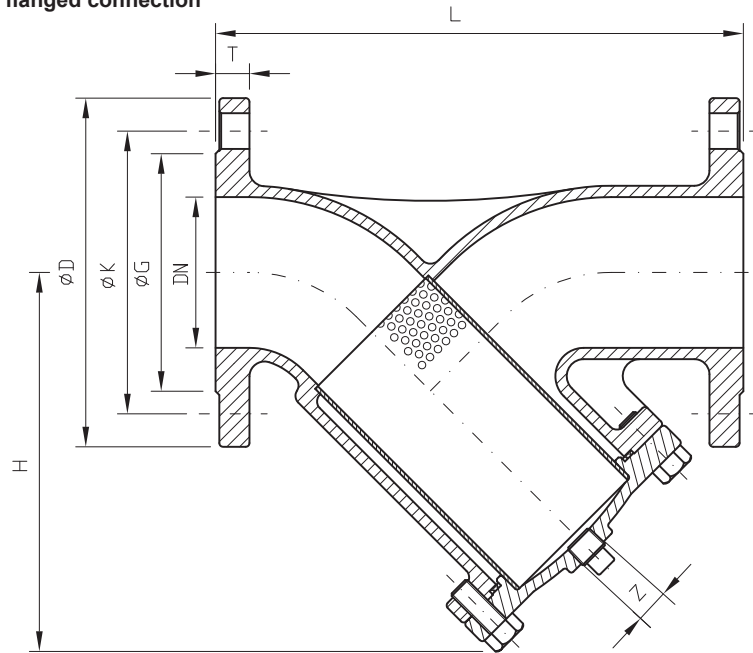
Bei den in dieser Dokumentation beschriebenen Produkten, in der von uns gelieferten Form, handelt es sich weder um Maschinen gemäß Artikel 2 Absatz a noch um unvollständige Maschinen gemäß Artikel 2 Absatz g im Sinne der Richtlinie 2006/42/EG über Maschinen.

Advice

The products described in this documentation in the conditions of our delivery are no machinery according to annex 2 paragraph a respectively no partly completed machinery according to annex 2 paragraph g of the directive 2006/42/EC on machinery.



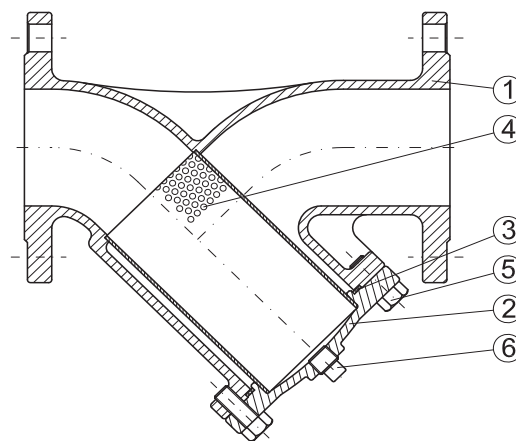
**Abmessungen: Schmutzfänger in Flanschausführung /
Dimension: Strainer with flanged connection**



DN	15	20	25	32	40	50	65'	80	100	125	150	200	250	300
L [mm]	130	150	160	180	200	230	290	310	350	400	480	600	730	850
D [mm]	95	105	115	140	150	165	185	200	220	250	285	340	405	460
K [mm]	65	75	85	100	110	125	145	160	180	210	240	295	355	410
G [mm]	45	58	68	78	88	102	122	138	158	188	212	268	320	378
H [mm]	90	82	110	110	130	145	175	196	250	285	330	400	520	525
T [mm]	14	16	16	16	16	18	18	20	20	22	22	24	26	26
Z ["]**	-	-	-	½	½	½	½	½	¾	¾	¾	¾	¾	¾
kg [mm]	2,8	3,57	5,31	5,95	8,16	11,82	17,54	20,9	23,8	32,0	44,0	71,0	128,0	204,0
Kv (m³/h)	3,30	6,60	9,70	14,90	26,60	35,40	67,20	96,10	149,00	198,50	294,60	462,50	-	-

**Stopfen/ Plug: ISO 228

**Aufbau: Schmutzfänger in Flanschausführung /
Construction: Strainer with flanged connection**



Pos.	Teilebezeichnung	part name	Material	material
1	Gehäuse	body	Edelstahl 1.4408	stainless steel 1.4408
2	Deckel	bonnet	Edelstahl 1.4408	stainless steel 1.4408
3	Dichtung	gasket	PTFE	PTFE
4	Sieb	screen	Edelstahl 1.4401	stainless steel 1.4401
5	Deckelschrauben	bonnet bolt	Edelstahl	Edelstahl
6	Verschuß	stopper	Edelstahl 1.4301	Stainless steel 1.4301

1) = Flansche PN16, DN65 werden in 4-Loch-Ausführung geliefert! / Flanges PN16, DN65 will be delivered in 4-hole execution!



ASD



Cover seal-AS, DN15, PTFE, for flange version, Ø35xØ30.4x2

Item number: ASD10002

Cover seal -AS, DN15, PTFE for flange version, Ø35xØ30.4x2



Cover seal-AS, DN20, PTFE, for flange design, Ø43xØ34x2.5

Item number: ASD10003

Cover seal-AS, DN20, PTFE
for flange version, Ø43xØ34x2.5



Cover seal-AS, DN25, PTFE, for flange version, Ø48xØ39x2.5

Item number: ASD10004

Cover seal-AS, DN25, PTFE
for flange design, Ø48xØ39x2.5



Cover seal-AS, DN32, PTFE, for flange version, Ø59xØ50x2

Item number: ASD10005

Cover seal-AS, DN32, PTFE
for flange version, Ø59xØ50x2



Cover seal-AS, DN40, PTFE, for flange version, Ø63xØ54x2

Item number: ASD10006

Cover seal-AS, DN40, PTFE
for flange version, Ø63xØ54x2

Cover seal-AS, DN50, PTFE, for flange version, Ø72xØ64x2.5

Item number: ASD10007



Price excluding VAT.

Cover seal-AS, DN50, PTFE
for flange version, Ø72xØ64x2.5



Cover seal-AS, DN65, PTFE, for flange version, Ø88xØ79x2

Item number: ASD10008

Cover seal-AS, DN65, PTFE
for flange version, Ø88xØ79x2



Cover seal-AS, DN80, PTFE, for flange version, Ø106xØ93x2

Item number: ASD10009

Cover seal-AS, DN80, PTFE
for flange version, Ø106xØ93x2



Cover seal-AS, DN100, PTFE, for flange version, Ø130xØ119x3

Item number: ASD10010

Cover seal-AS, DN100, PTFE
for flange version, Ø130xØ119x3



Cover gasket-AS, DN125, PTFE, for flange version, Ø156xØ148x3

Item number: ASD10011

Cover seal-AS, DN125, PTFE
for flange version, Ø156xØ148x3



Cover seal-AS, DN150, PTFE, for flange version, Ø193xØ182x3.5

Item number: ASD10012

Cover seal-AS, DN150, PTFE
for flange version, Ø193xØ182x3.5



Cover seal-AS, DN200, PTFE, for flange version, Ø251xØ239x3.5

Item number: ASD10013

Cover seal-AS, DN200, PTFE
for flange version, Ø251xØ239x3.5



Cover seal-AS, DN15, PTFE, for flange version, Ø33.5xØ29x1.5

Item number: ASD10002-M

Cover seal -AS, DN15, PTFE for flange version, Ø33.5xØ29x1.5



Cover seal-AS, DN20, PTFE, for flange version, Ø37xØ32x1.5

Item number: ASD10003-M

Cover seal-AS, DN20, PTFE
for flange version, Ø37xØ32x1.5



Cover seal-AS, DN25, PTFE, for flange version, Ø47xØ38x1.5

Item number: ASD10004-M

Cover seal-AS, DN25, PTFE
for flange version, Ø47xØ38x1.5



Cover seal-AS, DN32, PTFE, for flange version, Ø51xØ42x1.5

Item number: ASD10005-M

Cover seal-AS, DN32, PTFE
for flange version, Ø51xØ42x1.5



Cover seal-AS, DN40, PTFE, for flange version, Ø65.5xØ56x1.5

Item number: ASD10006-M

Cover seal-AS, DN40, PTFE
for flange version, Ø65.5xØ56x1.5



Cover seal-AS, DN50, PTFE, for flange version, Ø76.5xØ67x1.5

Item number: ASD10007-M

Cover seal-AS, DN50, PTFE
for flange version, Ø76.5xØ67x1.5



Cover gasket-AS, DN65, PTFE, for flange design, Ø91.5xØ76x1.5

Item number: ASD10008-M

Cover seal-AS, DN65, PTFE
for flange design, Ø91.5xØ76x1.5



Cover seal-AS, DN80, PTFE, for flange version, Ø110xØ96x2

Item number: ASD10009-M

Cover seal-AS, DN80, PTFE
for flange version, Ø110xØ96x2



Cover seal-AS, DN100, PTFE, for flange version, Ø131xØ116x2

Item number: ASD10010-M

Cover seal-AS, DN100, PTFE
for flange version, Ø131xØ116x2

ASS



Sieve AS, DN15, 0.6mm, stainless steel 1.4401, Ø20x60, for flange design

Item number: ASS00002



Sieve AS, DN15, 0.6mm, stainless steel 1.4401, Ø20x60
for flange design



Sieve AS, DN20, 0.6mm, stainless steel 1.4401, Ø24x55, for flange design

Item number: ASS00003



Sieve AS, DN20, 0.6mm, stainless steel 1.4401, Ø24x55
for flange design



Sieb-AS, DN25, 0.6mm, stainless steel 1.4401, Ø29x87.5, for flange design

Item number: ASS00004



Sieve AS, DN25, 0.6mm, stainless steel 1.4401, Ø29x87.5
for flange design



Sieve AS, DN32, 0.6mm, stainless steel 1.4401, Ø39x85, for flange design

Item number: ASS00005

Sieve AS, DN32, 0.6mm, stainless steel 1.4401, Ø39x85
for flange design

Sieve AS, DN40, 0.6mm, stainless steel 1.4401, Ø43x100, for flange



design

Item number: ASS00006



Sieve AS, DN40, 0.6mm, stainless steel 1.4401, Ø43x100
for flange design



Sieve AS, DN50, 0.6mm, stainless steel 1.4401, Ø52x103.5, for flange design

Item number: ASS00007



Sieb-AS, DN50, 0.6mm, stainless steel 1.4401, Ø52x103.5
for flange design



Sieve AS, DN65, 0.6mm, stainless steel 1.4401, Ø68x135, for flange design

Item number: ASS00008



Sieb-AS, DN65, 0.6mm, stainless steel 1.4401, Ø68x135
for flange design



Sieb-AS, DN80, 0.6mm, stainless steel 1.4401, Ø85x152, for flange design

Item number: ASS00009



Sieve AS, DN80, 0.6mm, stainless steel 1.4401, Ø85x152
for flange design

Sieb-AS, DN100, 0.6mm, stainless steel 1.4401, Ø105x158.5, for flange design

Item number: ASS00010



Sieb-AS, DN100, 0.6mm, stainless steel 1.4401, Ø105x158.5
for flange design



Sieb-AS, DN125, 0.6mm, stainless steel 1.4401, Ø131x220, for flange design

Item number: ASS00011



Sieb-AS, DN125, 0.6mm, stainless steel 1.4401, Ø131x220
for flange design



Sieb-AS, DN150, 0.6mm, stainless steel 1.4401, Ø156x245, for flange design

Item number: ASS00012



Sieb-AS, DN150, 0.6mm, stainless steel 1.4401, Ø156x245
for flange design



Sieb-AS, DN200, 0.6mm, stainless steel 1.4401, Ø206x300, for flange design

Item number: ASS00013



Sieb-AS, DN200, 0.6mm, stainless steel 1.4401, Ø206x300
for flange design



Sieb-AS, DN250, 0.6mm, stainless steel 1.4401, Ø258x500, for flange design

Item number: ASS00014



Sieb-AS, DN250, 0.6mm, stainless steel 1.4401, Ø258x500
for flange design



Sieve AS, DN20, 0.25mm, stainless steel 1.4401, Ø24x55, for flange design

Item number: ASS00103



Sieve AS, DN20, 0.25mm, stainless steel 1.4401, Ø24x55
for flange design



Sieb-AS, DN25, 0.25mm, stainless steel 1.4401, Ø29x87.5, for flange design

Item number: ASS00104



Sieve AS, DN25, 0.25mm, stainless steel 1.4401, Ø29x87.5
for flange design



Sieve AS, DN32, 0.25mm, stainless steel 1.4401, Ø39x85, for flange design

Item number: ASS00105



Sieve AS, DN32, 0.25mm, stainless steel 1.4401, Ø39x85
for flange design



Sieb-AS, DN40, 0.25mm, stainless steel 1.4401, Ø43x100, for flange design

Item number: ASS00106



Sieb-AS, DN40, 0.25mm, stainless steel 1.4401, Ø43x100
for flange design



Sieb-AS, DN50, 0.25mm, stainless steel 1.4401, Ø54x103.5, for flange design

Item number: ASS00107



Sieb-AS, DN50, 0.25mm, stainless steel 1.4401, Ø54x103.5
for flange design



Sieb-AS, DN65, 0.25mm, Edelstahl 1.4401, Ø68x135, für Flanschausführung

Artikelnummer: ASS00108



Sieb-AS, DN65, 0.25mm, Edelstahl 1.4401, Ø68x135
für Flanschausführung



Sieb-AS, DN80, 0.25mm, Edelstahl 1.4401, Ø85x152, für Flanschausführung

Artikelnummer: ASS00109



Sieb-AS, DN80, 0.25mm, Edelstahl 1.4401, Ø85x152
für Flanschausführung



Sieb-AS, DN100, 0.25mm, Edelstahl 1.4401, Ø105x158.5, für Flanschausführung

Artikelnummer: ASS00110



Sieb-AS, DN100, 0.25mm, Edelstahl 1.4401, Ø105x158.5
für Flanschausführung



Sieb-AS, DN125, 0.25mm, Edelstahl 1.4401, Ø131x220, für Flanschausführung

Artikelnummer: ASS00111



Sieb-AS, DN125, 0.25mm, Edelstahl 1.4401, Ø131x220
für Flanschausführung



Sieb-AS, DN150, 0.25mm, Edelstahl 1.4401, Ø156x245, für Flanschausführung

Artikelnummer: ASS00112



Sieb-AS, DN150, 0.25mm, Edelstahl 1.4401, Ø156x245
für Flanschausführung



Sieb-AS, DN200, 0.25mm, Edelstahl 1.4401, Ø206x300, für Flanschausführung

Artikelnummer: ASS00113



Sieb-AS, DN200, 0.25mm, Edelstahl 1.4401, Ø206x300
für Flanschausführung



Sieb-AS, DN250, 0.25mm, stainless steel 1.4401, Ø258x500, for flange design

Item number: ASS00114



Sieb-AS, DN250, 0.25mm, stainless steel 1.4401, Ø258x500
for flange design



Sieve AS, DN15, 0.6mm, stainless steel 1.4401, Ø22x58, for flange design

Item number: ASS00002-M



Sieve AS, DN15, 0.6mm, stainless steel 1.4401, Ø22x58
for flange design



Sieve AS, DN20, 0.6mm, stainless steel 1.4401, Ø26x65, for flange design

Item number: ASS00003-M



Sieve AS, DN20, 0.6mm, stainless steel 1.4401, Ø26x65
for flange design



Sieve AS, DN25, 0.6mm, stainless steel 1.4401, Ø32x72, for flange design

Item number: ASS00004-M



Sieve AS, DN25, 0.6mm, stainless steel 1.4401, Ø32x72
for flange design



Sieve AS, DN32, 0.6mm, stainless steel 1.4401, Ø37x83, for flange design

Item number: ASS00005-M



Sieve AS, DN32, 0.6mm, stainless steel 1.4401, Ø37x83
for flange design



Sieve AS, DN40, 0.6mm, stainless steel 1.4401, Ø47x95, for flange design

Item number: ASS00006-M



Sieve AS, DN40, 0.6mm, stainless steel 1.4401, Ø47x95
for flange design



Sieb-AS, DN50, 0.6mm, stainless steel 1.4401, Ø57x114, for flange design

Item number: ASS00007-M



Sieb-AS, DN50, 0.6mm, stainless steel 1.4401, Ø57x114
for flange design



Sieve AS, DN65, 0.6mm, stainless steel 1.4401, Ø69x152, for flange design

Item number: ASS00008-M



Sieb-AS, DN65, 0.6mm, Edelstahl 1.4401, Ø69x152
für Flanschausführung



Sieb-AS, DN80, 0.6mm, Edelstahl 1.4401, Ø84x176, für Flanschausführung

Artikelnummer: ASS00009-M



Sieb-AS, DN80, 0.6mm, Edelstahl 1.4401, Ø84x176
für Flanschausführung

Sieb-AS, DN100, 0.6mm, Edelstahl 1.4401, Ø105x180, für



Flanschausführung

Artikelnummer: ASS00010-M



Sieb-AS, DN100, 0.6mm, Edelstahl 1.4401, Ø105x180
für Flanschausführung



Sieb-AS, DN15, 0.25mm, Edelstahl 1.4401, Ø22x58, für Flanschausführung

Artikelnummer: ASS00102-M



Sieb-AS, DN15, 0.25mm, Edelstahl 1.4401, Ø22x58
für Flanschausführung



Sieb-AS, DN20, 0.25mm, Edelstahl 1.4401, Ø26x65, für Flanschausführung

Artikelnummer: ASS00103-M



Sieb-AS, DN20, 0.25mm, Edelstahl 1.4401, Ø26x65
für Flanschausführung



Sieb-AS, DN25, 0.25mm, Edelstahl 1.4401, Ø32x72, für Flanschausführung

Artikelnummer: ASS00104-M



Sieb-AS, DN25, 0.25mm, Edelstahl 1.4401, Ø32x72
für Flanschausführung



Qualität von Anfang an.

Technische Daten

BAUFORM

2-teilige Körperkonstruktion (verschraubt).
Baulänge nach EN 558-1 Reihe 1.

ANSCHLUSS

Flansch DN15 ... DN200
PN16 gebohrt. Flansche PN16 - DN65 werden
in 4-Loch-Ausführung geliefert!

EINBAULAGE

Beliebig, vorzugsweise für waagerechten
oder senkrechten Einbau. Durchflussrichtung
beachten.

MEDIUM

Nicht aggressive Flüssigkeiten, Dämpfe und
Gase.

MEDIUMDRUCK UND TEMPERATUR

200°C bei 13 bar
250°C bei 11 bar
300°C bei 10 bar

WERKSTOFFE

Gehäuse: GG-25
Sieb: Edelstahl 1.4301

MASCHENWEITE

0,60mm	DN15 ... DN20
0,80mm	DN25 ... DN65
1,20mm	DN80 ... DN200
0,25mm	alle Größen

Alle Angaben sind freibleibend und
unverbindlich!

Specification

DESIGN

Body consists of two screwed parts. Face to
face length according to EN 558-1 Row 1.

CONNECTION

Flange DN15 ... DN200
PN16 drilled. Flanges PN16 - DN65 will be
delivered in 4-hole execution!

MOUNTING POSITION

As desired, preferably for horizontal or vertical
mounting. Please refer to flow direction.

MEDIA

Non aggressive liquids, steams and gases.

PRESSURE-AND TEMPERATURE RANGE

200°C at 13 bar
250°C at 11 bar
300°C at 10 bar

MATERIAL

Body: GG-25
Screen: Stainless steel 1.4301

MESH

0,60mm	DN15 ... DN20
0,80mm	DN25 ... DN65
1,20mm	DN80 ... DN200
0,25mm	all sizes

The above information is intended for guidance
only and the company reserves the right to
change any data herein without prior notice!

Artikel:

CU

Schmutzfänger
PN 16

GG-25



Type:

CU

Strainer
PN 16

GG-25

Artikel- u. Bestellangaben: z.B. CU500007

= Schmutzfänger, GG-25, Maschenweite = 0,8mm, DN 50

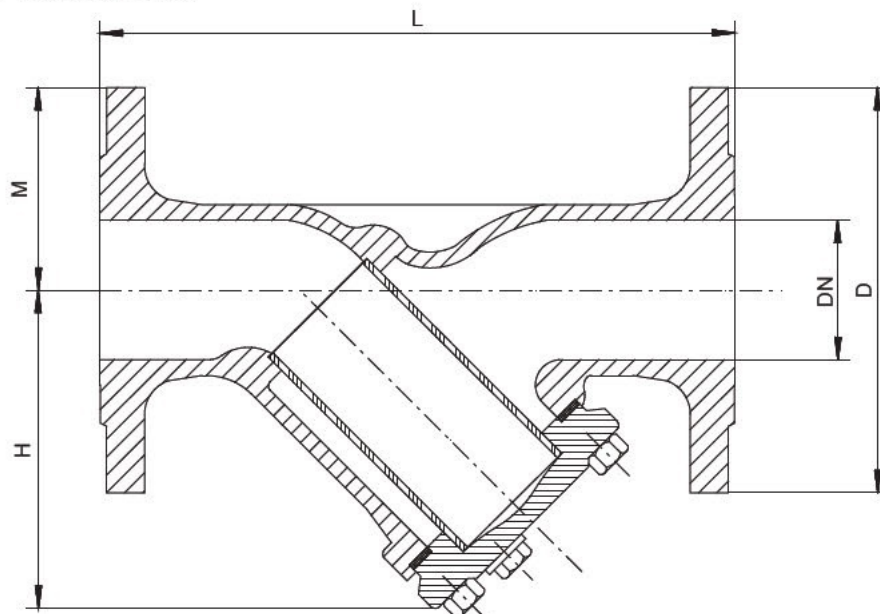
1.+ 2. Stelle Produkt	3.+ 4. Stelle Werkstoffe Gehäuse	5. Stelle Zusatzausstattung	6. Stelle Maschenweite	7.+ 8. Stelle Anschlußgröße
CU = Schmutzfänger	50 = GG-25	0 = ohne	0 = 0,60 mm (DN15 - DN20) 0,80 mm (DN25 - DN65) 1,20 mm (DN80 - DN200) 1 = 0,25 mm (DN15 - DN200)	02 = DN 15 03 = DN 20 04 = DN 25 05 = DN 32 06 = DN 40 07 = DN 50 08 = DN 65 09 = DN 80 10 = DN 100 11 = DN 125 12 = DN 150 13 = DN 200

Ordering example: e.g. CU500007

= Strainer, GG-25, Mesh = 0,8mm, DN 50

1.+ 2. Digit Product	3.+ 4. Digit Material Body	5. Digit Options	6. Digit Mesh	7.+ 8. Digit Connection size
CU = strainer	50 = GG-25	0 = without	0 = 0,60 mm (DN15 - DN20) 0,80 mm (DN25 - DN65) 1,20 mm (DN80 - DN200) 1 = 0,25 mm (DN15 - DN200)	02 = DN 15 03 = DN 20 04 = DN 25 05 = DN 32 06 = DN 40 07 = DN 50 08 = DN 65 09 = DN 80 10 = DN 100 11 = DN 125 12 = DN 150 13 = DN 200

Abmessungen / Dimension:

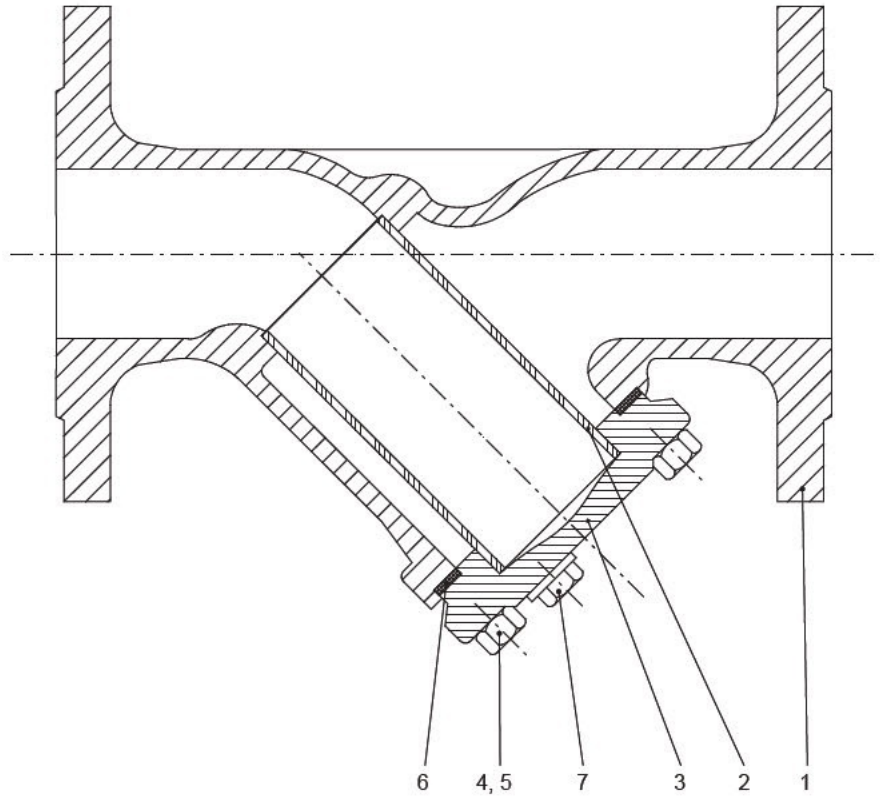


DN	15	20	25	32	40	50	65*	80	100	125	150	200
L	130	150	160	180	200	230	290	310	350	400	480	600
D	95	105	115	140	150	165	185	200	220	250	285	340
M	47,5	52,5	57,5	70	75	82,5	92,5	100	110	125	142,5	170
H	75	75	90	90	110	120	140	165	220	260	300	360
kg	2,4	3,3	3,8	5,0	6,5	9,6	12,5	18,0	25,0	39,0	61,0	109

*) = Flansche PN16 - DN65 werden in 4-Loch-Ausführung geliefert! / Flanges PN16 - DN65 will be delivered in 4-hole execution!



Stückliste / Parts list:



Pos.	Benennung	Description	Material	Material
1	Gehäuse	body	Grauguss GG-25	Grey cast iron GG-25
2	Sieb	screen	Edelstahl 1.4301	Stainless steel 1.4301
3	Deckel	bonnet	Grauguss GG-25	Grey cast iron GG-25
4	Stiftschraube	stud	5.8	5.8
5	Sechskantmutter	hexagon nut	6	6
6	Dichtung	seal	Graphit	Graphite
7	Stopfen (ab DN65)	plug (from DN65)	Edelstahl	Stainless steel



CUD



Cover gasket CU5, DN15, graphite

Item number: CUD00002



Cover gasket CU5, DN20, graphite

Item number: CUD00003



Cover gasket CU5, DN25, graphite

Item number: CUD00004



Cover gasket CU5, DN32, graphite

Item number: CUD00005



Cover gasket CU5, DN40, graphite

Item number: CUD00006



Cover gasket CU5, DN50, graphite

Item number: CUD00007



Cover gasket CU5, DN65, graphite

Item number: CUD00008



Cover gasket CU5, DN80, graphite

Item number: CUD00009



Cover gasket CU5, DN100, graphite

Item number: CUD00010



Cover gasket CU5, DN125, graphite, (1 piece each old and new version)

Item number: CUD00011

Cover gasket CU5, DN150, graphite

Item number: CUD00012



Cover gasket CU5, DN200, graphite

Item number: CUD00013



CUS



Sieve-CU5, DN15, mesh size 0.6mm, stainless steel 1.4301

Item number: CUS00002



Sieve-CU5, DN15, mesh size 0.6mm,
stainless steel 1.4301



Sieve-CU5, DN20, mesh size 0.6mm, stainless steel 1.4301

Item number: CUS00003



Sieve-CU5, DN20, mesh size 0.6mm,
stainless steel 1.4301



Sieve-CU5, DN25, mesh size 0.8mm, stainless steel 1.4301

Item number: CUS00004



Sieve-CU5, DN25, mesh size 0.8mm,
stainless steel 1.4301



Sieve-CU5, DN32, mesh size 0.8mm, stainless steel 1.4301

Item number: CUS00005



Sieve-CU5, DN32, mesh size 0.8mm,
stainless steel 1.4301



Sieve-CU5, DN40, mesh size 0.8mm, stainless steel 1.4301

Item number: CUS00006



Sieve-CU5, DN40, mesh size 0.8mm,
stainless steel 1.4301



Sieve-CU5, DN50, mesh size 0.8mm, stainless steel 1.4301

Item number: CUS00007



Sieve-CU5, DN50, mesh size 0.8mm,
stainless steel 1.4301



Sieve-CU5, DN65, mesh size 0.8mm, stainless steel 1.4301

Item number: CUS00008



Sieve-CU5, DN65, mesh size 0.8mm,
stainless steel 1.4301



Sieve-CU5, DN80, mesh size 1.2mm, stainless steel 1.4301

Item number: CUS00009



Sieve-CU5, DN80, mesh size 1.2mm,
stainless steel 1.4301

Sieve-CU5, DN100, mesh size 1.2mm, stainless steel 1.4301

Item number: CUS00010





Sieve-CU5, DN100, mesh size 1.2mm
stainless steel 1.4301



Sieve-CU5, DN125, mesh size 1.2mm, stainless steel
1.4301

Item number: CUS00011



Sieve-CU5, DN125, mesh size 1.2mm,
stainless steel 1.4301



Sieve-CU5, DN150, mesh size 1.2mm, stainless steel
1.4301

Item number: CUS00012



Sieve-CU5, DN150, mesh size 1.2mm,
stainless steel 1.4301



Sieve-CU5, DN200, mesh size 1.2mm, stainless steel
1.4301

Item number: CUS00013



Sieve-CU5, DN200, mesh size 1.2mm,
stainless steel 1.4301

Sieve-CU5, DN15, mesh size 0.25mm, stainless steel
1.4301

Item number: CUS00102



Sieve-CU5, DN15, mesh size 0.25mm,
stainless steel 1.4301



Sieve-CU5, DN20, mesh size 0.25mm, stainless steel
1.4301

Item number: CUS00103



Sieve-CU5, DN20, mesh size 0.25mm,
stainless steel 1.4301



Sieve-CU5, DN25, mesh size 0.25mm, stainless steel
1.4301

Item number: CUS00104



Sieve-CU5, DN25, mesh size 0.25mm,
stainless steel 1.4301



Sieve-CU5, DN32, mesh size 0.25mm, stainless steel
1.4301

Item number: CUS00105



Sieve-CU5, DN32, mesh size 0.25mm,
stainless steel 1.4301

Sieve-CU5, DN40, mesh size 0.25mm, stainless steel
1.4301

Item number: CUS00106



Sieve-CU5, DN40, mesh size 0.25mm,
stainless steel 1.4301



Sieve-CU5, DN50, mesh size 0.25mm, stainless steel
1.4301

Item number: CUS00107



Sieve-CU5, DN50, mesh size 0.25mm,
stainless steel 1.4301



Sieve-CU5, DN65, mesh size 0.25mm, stainless steel
1.4301

Item number: CUS00108



Sieve-CU5, DN65, mesh size 0.25mm,
stainless steel 1.4301



Sieve-CU5, DN80, mesh size 0.25mm, stainless steel
1.4301

Item number: CUS00109



Sieve-CU5, DN80, mesh size 0.25mm,
stainless steel 1.4301

Sieve-CU5, DN100, mesh size 0.25mm, stainless steel
1.4301

Item number: CUS00110



Sieve-CU5, DN100, mesh size 0.25mm
stainless steel 1.4301



Sieve-CU5, DN125, mesh size 0.25mm, stainless steel
1.4301

Item number: CUS00111



Sieve-CU5, DN125, mesh size 0.25mm,
stainless steel 1.4301



Sieve-CU5, DN150, mesh size 0.25mm, stainless steel
1.4301

Item number: CUS00112



Sieve-CU5, DN150, mesh size 0.25mm,
stainless steel 1.4301



Sieve-CU5, DN200, mesh size 0.25mm, stainless steel
1.4301

Item number: CUS00113



Sieve-CU5, DN200, mesh size 0.25mm,
stainless steel 1.4301



Qualität von Anfang an.

Technische Daten

BAUFORM

2- teilige Körperkonstruktion (verschraubt),
Baulänge nach EN 558-1 Reihe 1.

ANSCHLUSS

DN15 - DN50 : Flanschanschluß PN 40
DN65 - DN80 : Flanschanschluß PN 16
Flansche PN16 - DN65 werden in 4-Loch-
Ausführung geliefert!

EINBAULAGE

Deckel nach unten, Durchflußrichtung beach-
ten.

MEDIUMDRUCK

DN15 - DN50 : PN 40
DN65 - DN80 : PN 16

TEMPERATUR

-30°C bis max. +180°C

MASCHENWEITE

DN15 - DN50 / ½" - 2"
Einfachsieb 0,50 mm
Doppelsieb 0,25 mm

DN65 - DN80 / 2½" - 3"
Einfachsieb 1,00 mm
Doppelsieb 0,50 mm

WERKSTOFFE

Gehäuse:	Edelstahl 1.4408
Deckel:	Edelstahl 1.4408
Siebzylinder:	Edelstahl 1.4301
Dichtung:	PTFE

Alle Angaben sind freibleibend und unver-
bindlich!

Specification

DESIGN

Body consists of two screwed parts, face to
face acc. to EN 558-1 R1.

CONNECTION

DN15 - DN50 : Connection flange PN 40
DN65 - DN80 : Connection flange PN 16
Flanges PN16 - DN65 will be delivered in
4-hole execution!

MOUNTING POSITION

Bonnet upside down, please refer to flow
direction.

PRESSURE RANGE

DN15 - DN50 : PN 40
DN65 - DN80 : PN 16

TEMPERATURE

-30°C up to max. +180°C

MESH

DN15 - DN50 / ½" - 2"
Filter (Standard) 0,50 mm
Filter (Fine) 0,25 mm

DN65 - DN80 / 2½" - 3"
Filter (Standard) 1,00 mm
Filter (Fine) 0,50 mm

MATERIAL

Body:	Stainless steel 1.4408
bonnet:	Stainless steel 1.4408
screen:	Stainless steel 1.4301
Seal:	PTFE

The above information is intended for guidance
only and the company reserves the right to
change any data herein without prior notice!

Artikel:

EA

Schmutzfänger
mit Flanschanschluß
PN 16

Edelstahl



Type:

EA

Strainer
with flanged connection
PN 16

Stainless steel



Artikel- u. Bestellangaben: z.B. EA300104

= Schmutzfänger, Edelstahl, 0,25mm Maschenweite (Doppelsieb), DN 25

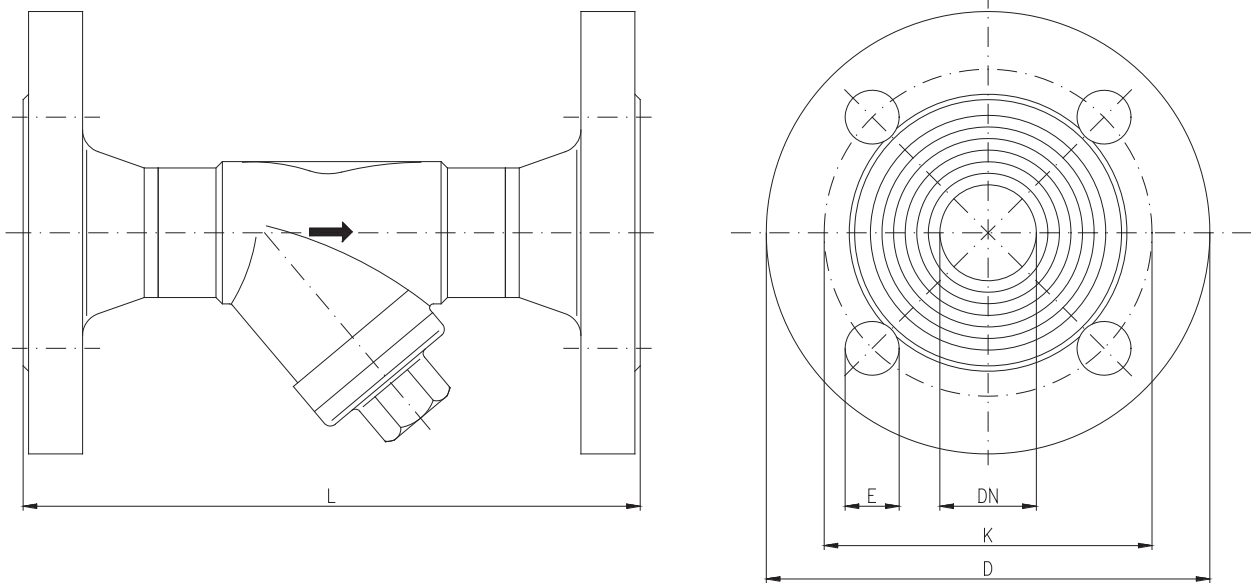
1.+ 2. Stelle Produkt	3.+ 4. Stelle Gehäusewerkstoff	5. Stelle Betätigung	6. Stelle Maschenweite	7.+ 8. Stelle Anschlußgröße
EA = Schmutzfänger	30 = Edelstahl 1.4408	0 = ohne	DN15 - DN50 0 = 0,50 mm 1 = 0,25 mm DN65 - DN80 0 = 1,00 mm 1 = 0,50 mm	02 = DN 15 03 = DN 20 04 = DN 25 05 = DN 32 06 = DN 40 07 = DN 50 08 = DN 65 09 = DN 80

Ordering example: e.G. EA300104

= Strainer, stainless steel, mesh 0,25mm (Fine), DN 25

1.+ 2. Digit Product	3.+ 4. Digit Body material	5. Digit Operation	6. Digit Mesh	7.+ 8. Digit Connecting size
EA = Strainer	30 = Stainless steel 1.4408	0 = without	DN15 - DN50 0 = 0,50 mm 1 = 0,25 mm DN65 - DN80 0 = 1,00 mm 1 = 0,50 mm	02 = DN 15 03 = DN 20 04 = DN 25 05 = DN 32 06 = DN 40 07 = DN 50 08 = DN 65 09 = DN 80

Abmessungen / Dimension :

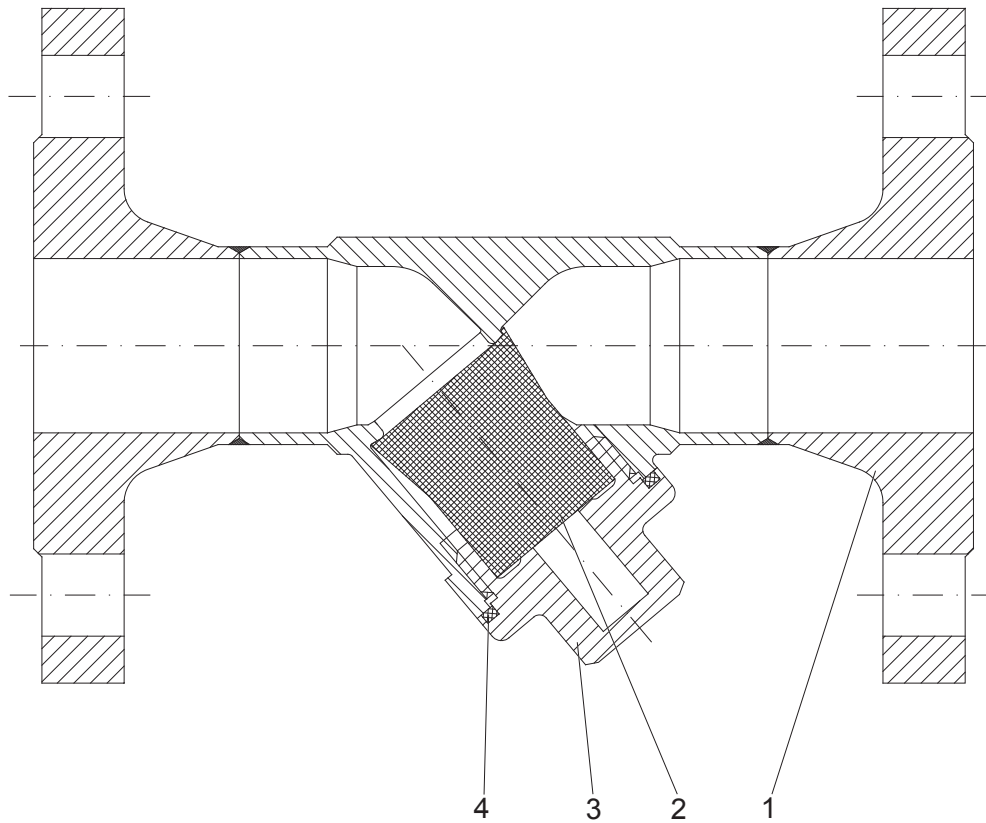


DN	L	ØD	ØK	n	ØE	kg
[mm]	[mm]	[mm]	[mm]		[mm]	
15	130	95	65	4	14	1,4
20	150	105	75	4	14	1,9
25	160	115	85	4	14	2,3
32	180	140	100	4	18	3,4
40	200	150	110	4	18	3,6
50	230	165	125	4	18	3,8
65 *	290	185	145	4	18	
80	310	200	160	8	18	

* Flansche PN16 - DN65 werden in 4-Loch-Ausführung geliefert!
 Flanges PN16 - DN65 will be delivered in 4-hole execution!



Stückliste / Parts list :



Pos.	Benennung	Discription	Material	Material
1	Gehäuse	body	Edelstahl 1.4408	stainless steel 1.4408
2	Sieb	screen	Edelstahl 1.4301	stainless steel 1.4301
3	Deckel	bonnet	Edelstahl 1.4408	stainless steel 1.4408
4	Dichtung	seal	PTFE	PTFE

Hinweis

Bei den in dieser Dokumentation beschriebenen Produkten, in der von uns gelieferten Form, handelt es sich weder um Maschinen gemäß Artikel 2 Absatz a noch um unvollständige Maschinen gemäß Artikel 2 Absatz g im Sinne der Richtlinie 2006/42/EG über Maschinen.

Advice

The products described in this documentation in the conditions of our delivery are no machinery according to annex 2 paragraph a respectively no partly completed machinery according to annex 2 paragraph g of the directive 2006/42/EC on machinery.



EAS

Sieve EA - 1 ", mesh size = 0.10mm, with support ring, Ø26 x Ø21.5 x 36.3, stainless steel

Item number: EAS-010-25-005 / 4301

Our alternative to EAS-010-23-005 / 4301, EAS-010-24-005 / 4301, EAS-010-25-005 / 4301, EAS-010-26-005 / 4301, EAS-010-27-005 / 4301, EAS-010-28-005 / 4301

Sieve EA - 1 ", mesh size = 0.10mm, with support ring
Ø26 x Ø21.5 x 36.3, stainless steel

Sieve EA - 2 ", mesh size = 0.10mm, with support ring, Ø48.5 x Ø45 x 63.5, stainless steel

Item number: EAS-010-28-005 / 4301

Sieve EA - 2 ", mesh size = 0.10mm, with support ring
Ø48.5 x Ø45 x 63.5, stainless steel

Sieve EA - 1/2 ", mesh size = 0.10mm, with support ring, Ø14.7 x Ø10.5 x 21.3, stainless steel

Item number: EAS-010-23-005 / 4301

Sieve EA - 1/2 ", mesh size = 0.10mm, with support ring
Ø14.7 x Ø10.5 x 21.3, stainless steel

Sieve EA - 3/4 ", mesh size = 0.10mm, with support ring, Ø20.5 x Ø16 x 27.3, stainless steel

Item number: EAS-010-24-005 / 4301

Sieve EA - 3/4 ", mesh size = 0.10mm, with support ring
Ø20.5 x Ø16 x 27.3, stainless steel

Sieve EA - 1 1/2 ", mesh size = 0.10mm, with support ring, Ø37 x Ø35 x 51.3, stainless steel

Item number: EAS-010-27-005 / 4301

Sieve EA - 1 1/2 ", mesh size = 0.10mm, with support ring Ø37 x Ø35 x 51.3, stainless steel

Sieve EA - 1 1/4 ", mesh size = 0.10mm, with support ring, Ø35 x Ø31 x 48, stainless steel

Item number: EAS-010-26-005 / 4301

Sieve EA - 1 1/4 ", mesh size = 0.10mm, with support ring Ø35 x Ø31 x 48, stainless steel



Sieve EA, 2 1/2 ", mesh size = 1mm, Edel., Ø59x98mm, wire thickness = 0.3mm

Item number: EAS-100-29-001 / 4401

Sieve EA, 2 1/2 ", mesh size = 1mm, noble. Ø59x98mm, wire thickness = 0.3mm



Sieve insert-EA - 1/2 ", mesh size = 0.25mm, Ø13.5 x Ø9.3 x 21.3, stainless steel

Item number: EAS-025-23-005 / 4301



Sieve insert-EA - 1/2 ", mesh size = 0.25mm Ø13.5 x Ø9.3 x 21.3, stainless steel



Sieve insert EA - 3/4 ", mesh size = 0.25mm, Ø19.3 x Ø14.8 x 27.3, stainless steel

Item number: EAS-025-24-005 / 4301



Sieve insert EA - 3/4 ", mesh size = 0.25mm Ø19.3 x Ø14.8 x 27.3, stainless steel

Sieve insert EA - 1 ", mesh size = 0.25mm, Ø24.8 x Ø20.3 x 36.3, stainless steel

Item number: EAS-025-25-005 / 4301



Sieve insert-EA - 1 ", mesh size = 0.25mm
Ø24.8 x Ø20.3 x 36.3, stainless steel



Sieve insert EA - 1 1/2 ", mesh size = 0.25mm, Ø35.8 x Ø30.8 x 51.3, stainless steel

Item number: EAS-025-27-005 / 4301



Sieve insert EA - 1 1/2 ", mesh size = 0.25mm
Ø35.8 x Ø30.8 x 51.3, stainless steel



Sieve insert EA - 2 ", mesh size = 0.25mm, Ø47.3 x Ø40.8 x 63.5, stainless steel

Item number: EAS-025-28-005 / 4301



Sieve insert EA - 2 ", mesh size = 0.25mm
Ø47.3 x Ø40.8 x 63.5, stainless steel



Sieve EA, 2 1/2 ", mesh size = 0.25mm, Edel., Ø59x98mm, wire thickness = 0.16mm

Item number: EAS-025-29-001 / 4401



Sieb-EA, 2 1/2 ", mesh width = 0.25mm, noble.
Ø59x98mm, wire thickness = 0.16mm

Sieve EA - 1 ", mesh size = 0.50mm, with support ring, Ø26 x Ø21.5 x 36.3, stainless steel

Item number: EAS-050-25-005 / 4301



Sieve EA - 1 " , mesh size = 0.50mm, with support ring
Ø26 x Ø21.5 x 36.3, stainless steel



Sieve EA - 1 1/2 " , mesh size = 0.50mm, with support ring, Ø37 x
Ø35 x 51.3, stainless steel

Item number: EAS-050-27-005 / 4301



Sieve EA - 1 1/2 " , mesh size = 0.50mm, with support
ring Ø37 x Ø35 x 51.3, stainless steel



Sieve EA - 2 " , mesh size = 0.50mm, with support ring, Ø48.5 x Ø45
x 63.5, stainless steel

Item number: EAS-050-28-005 / 4301



Sieve EA - 2 " , mesh size = 0.50mm, with support ring
Ø48.5 x Ø45 x 63.5, stainless steel



Sieve EA, 2 1/2 " , mesh size = 0.5mm, Edel., Ø59x98mm, wire thick-
ness = 0.2mm

Item number: EAS-050-29-001 / 4401



Sieve EA, 2 1/2 " , mesh size = 0.5mm, noble.
Ø59x98mm, wire thickness = 0.2mm

Sieve EA - 1/2 " , mesh size = 0.50mm, with support ring, Ø14.7 x
Ø10.5 x 21.3, stainless steel

Item number: EAS-050-23-005 / 4301



Sieve EA - 1/2 ", mesh size = 0.50mm, with support ring
Ø14.7 x Ø10.5 x 21.3, stainless steel



Sieve insert EA - 1 1/4 ", mesh size = 0.25mm, Ø33.4 x Ø27.9 x 48, stainless steel

Item number: EAS-025-26-005 / 4301



Sieve insert EA - 1 1/4 ", mesh size = 0.25mm
Ø33.4 x Ø27.9 x 48, stainless steel



Sieve EA, 3 ", mesh size = 0.25mm, Edel., Ø71x102mm, wire thickness = 0.165mm

Item number: EAS-025-30-001 / 4401



Sieve EA, 3 ", mesh size = 0.25mm, noble
Ø71x102mm, wire thickness = 0.165mm



Sieve EA - 3/4 ", mesh size = 0.50mm, with support ring, Ø20.5 x Ø16 x 27.3, stainless steel

Item number: EAS-050-24-005 / 4301



Sieve EA - 3/4 ", mesh size = 0.50mm, with support ring
Ø20.5 x Ø16 x 27.3, stainless steel

Sieve EA - 1 1/4 ", mesh size = 0.50mm, with support ring, Ø35 x Ø31 x 48, stainless steel

Item number: EAS-050-26-005 / 4301



Sieve EA - 1 1/4 ", mesh size = 0.50mm, with support ring Ø35 x Ø31 x 48, stainless steel



Sieve EA, 3 ", mesh size = 0.5mm, Edel., Ø71x102mm, wire thickness = 0.2mm

Item number: EAS-050-30-001 / 4401



Sieve EA, 3 ", mesh size = 0.5mm, noble.
Ø71x102mm, wire thickness = 0.2mm



Qualität von Anfang an.

Technische Daten

BAUFORM

Edelstahl-Schmutzfänger mit 2-teiliger Körperkonstruktion (verschraubt).

ANSCHLUSS

Rp $\frac{1}{4}$ " ... Rp3" nach DIN2999

EINBAULAGE

Beliebig, vorzugsweise für waagerechten oder senkrechten Einbau.
Durchflussrichtung beachten.

NENNDRUCK

PN40

TEMPERATURBEREICH

-25°C ... +180°C

WERKSTOFFE

Gehäuse: Edelstahl 1.4408
Sieb: Edelstahl 1.4301
Dichtung: PTFE

MASCHENWEITE

Normalsieb: 0,60mm
Feinsieb: 0,25mm

Alle Angaben sind freibleibend und unverbindlich!

Specification

DESIGN

Strainer made of stainless steel.
Body consists of two screwed parts.

CONNECTION

Rp $\frac{1}{4}$ " ... Rp3" acc. to DIN2999

MOUNTING POSITION

As desired, preferably for horizontal or vertical mounting.
Please refer to flow direction.

NOMINAL PRESSURE

PN40

TEMPERATURE RANGE

-25°C ... +180°C

MATERIAL

Body: Stainless steel 1.4408
Mesh: Stainless steel 1.4301
Sealing: PTFE

MESH

Standard screen: 0,60mm
Fine screen: 0,25mm

The above information is intended for guidance only and the company reserves the right to change any data herein without prior notice!

Artikel:
GS

Schmutzfänger
PN40

Edelstahl



Type:
GS

Strainer
PN40

Stainless Steel



Artikel- u. Bestellangaben: z.B. GS300025

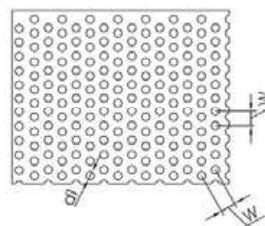
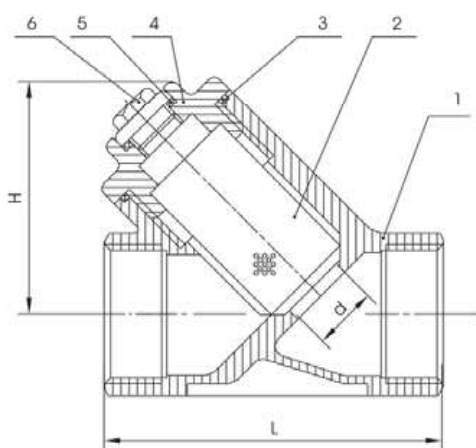
= Schmutzfänger, Edelstahl, Maschenweite = 0,60 mm, 1"

1.+ 2. Stelle Produkt	3.+ 4. Stelle Gehäusewerkstoff	5. Stelle Zusatzausstattung	6. Stelle Maschenweite	7.+ 8. Stelle Anschlussgröße
GS = Schmutzfänger	30 = Edelstahl	0 = ohne	0 = 0,60mm 1 = 0,25mm	21 = ¼ 22 = ⅜ 23 = ½ 24 = ¾ 25 = 1 26 = 1¼ 27 = 1½ 28 = 2 29 = 2½ 30 = 3

Ordering example: e.G. GS300025

= Strainer, Stainless steel, Mesh = 0,60 mm, 1"

1.+ 2. Digit Product	3.+ 4. Digit Bodymaterial	5. Digit Options	6. Digit Mesh	7.+ 8. Digit Connection size
GS = Strainer	30 = Stainless steel	0 = without	0 = 0,60mm 1 = 0,25mm	21 = ¼ 22 = ⅜ 23 = ½ 24 = ¾ 25 = 1 26 = 1¼ 27 = 1½ 28 = 2 29 = 2½ 30 = 3



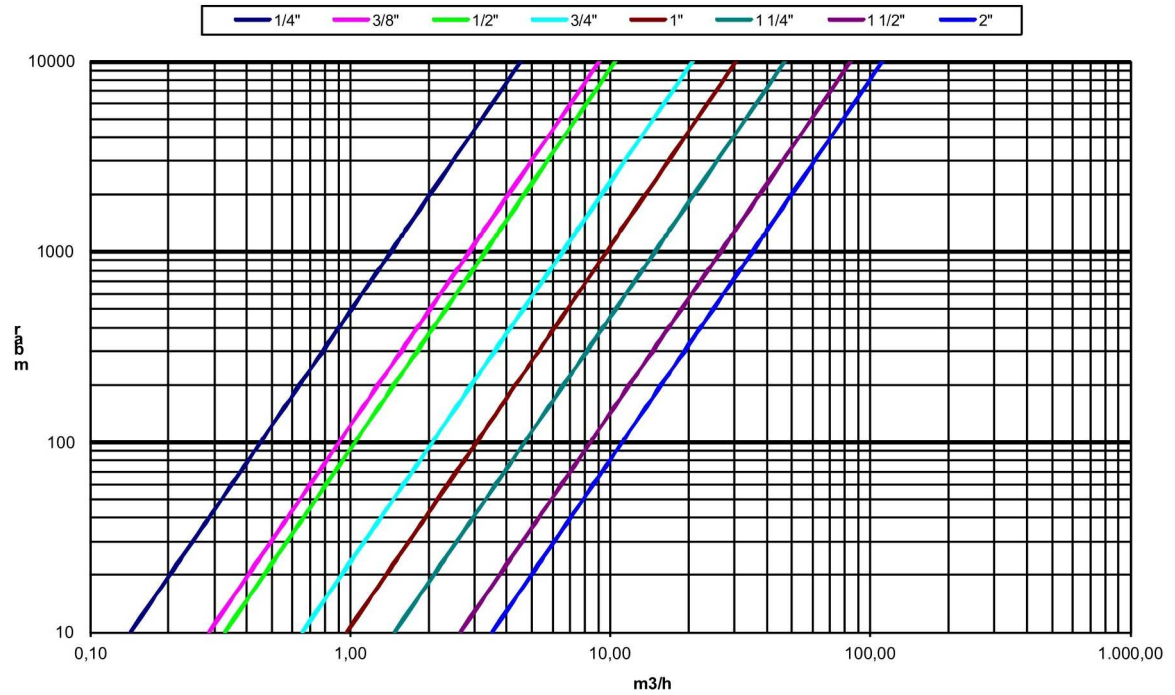
Abmessungen / Dimension

G	¼"	⅜"	½"	¾"	1"	1¼	1½	2	2½	3
d	10	12	15	20	25	32	40	50	61	75
L [mm]	64	64	64	80	90	106	119	140	167	198
H [mm]	43	43	45	52	68	70	80	98	117	137
W	2	2	2	2	2	2	2	2	2	2
d1	0,6 / 0,25	0,6 / 0,25	0,6 / 0,25	0,6 / 0,25	0,6 / 0,25	0,6 / 0,25	0,6 / 0,25	0,6 / 0,25	0,6 / 0,25	0,6 / 0,25
kg [mm]	0,25	0,25	0,26	0,38	0,68	0,88	1,36	2,5	4,85	7,3
Kv m³/h	1,44	2,88	3,30	6,60	9,70	14,90	26,60	35,40	-	-
6*	¼"				3/8"			½"		



Stückliste / Parts list

Pos.	Bezeichnung	Description	Material	Material
1	Gehäuse	Body	Edelstahl 1.4408	Stainless steel 1.4408
2	Sieb	Screen	Edelstahl 1.4301	Stainless steel 1.4301
3	Dichtung	Seal	PTFE	PTFE
4	Deckel	Cap	Edelstahl 1.4408	Stainless steel 1.4408
5	Dichtung O-Ring	Seal O-Ring	PTFE	PTFE
6*	Ablassschraube	Blow off	Edelstahl 1.4401	Stainless steel 1.4401



GSD



Cover gasket-GS, 1/4 "+3/8", PTFE

Item number: GSD10021

Cover gasket-GS, 1/4 "+3/8", PTFE



Cover gasket-GS, 1/2 ", PTFE, Ø27.9Ø24.9x1.5

Item number: GSD10023

Cover gasket-GS, 1/2 ", PTFE, Ø27.9Ø24.9x1.5



Lid seal-GS, 3/4 ", PTFE

Item number: GSD10024

Lid seal-GS, 3/4 ", PTFE



Lid seal-GS, 1 ", PTFE

Item number: GSD10025

Lid seal-GS, 1 ", PTFE



Lid seal-GS, 1 1/4 ", PTFE

Item number: GSD10026

Lid seal-GS, 1 1/4 ", PTFE



Lid seal-GS, 1 1/2 ", PTFE

Item number: GSD10027

Lid seal-GS, 1 1/2 ", PTFE



Lid seal-GS, 2 ", PTFE

Item number: GSD10028

Lid seal-GS, 2 ", PTFE



Cover gasket-GS, 1/4 "-1/2", PTFE, Ø27.5xØ24.5x1.4

Item number: GSD10021-M

Cover gasket-GS, 1/4 "-1/2", PTFE, Ø27.5xØ24.5x1.4



Cover gasket-GS, 3/4 ", PTFE, Ø32.5xØ30.2x1.4

Item number: GSD10024-M

Cover gasket-GS, 3/4 ", PTFE, Ø32.5xØ30.2x1.4



Cover gasket-GS, 1 ", PTFE, Ø42.8xØ40.3x1.4

Item number: GSD10025-M

Cover gasket-GS, 1 ", PTFE, Ø42.8xØ40.3x1.4

Cover gasket-GS, 1 1/4 ", PTFE, Ø45.7xØ42.5x1.7

Item number: GSD10026-M



Cover gasket-GS, 1 1/4 ", PTFE, Ø45.7xØ42.5x1.7



Cover gasket-GS, 1 1/2 ", PTFE, Ø53.7xØ50.5x1.7

Item number: GSD10027-M

Cover gasket-GS, 1 1/2 ", PTFE, Ø53.7xØ50.5x1.7



Cover gasket-GS, 2 ", PTFE, Ø65xØ60.5x1.7

Item number: GSD10028-M

Cover gasket-GS, 2 ", PTFE, Ø65xØ60.5x1.7



Cover gasket-GS, 2 1/2 ", PTFE, Ø81.5xØ77.5x2

Item number: GSD10029-M

Cover gasket-GS, 2 1/2 ", PTFE, Ø81.5xØ77.5x2



Cover gasket-GS, 3 ", PTFE, Ø97xØ92.5x2

Item number: GSD10030-M

Cover gasket-GS, 3 ", PTFE, Ø97xØ92.5x2

Cover gasket-GS, 4 ", PTFE, Ø119.5xØ114.5x2

Item number: GSD10031-M



Cover gasket-GS, 4 ", PTFE, Ø119.5Ø114.5x2

GSS



Sieve-GS, 1/4 ", 0.25mm, stainless steel 1.4401, Ø18x30

Item number: GSS00121



Sieve-GS, 1/4 ", 0.25mm, stainless steel 1.4401, Ø18x30

Sieve-GS, 3/8 ", 0.25mm, stainless steel 1.4401, Ø18x30

Item number: GSS00122



Sieve-GS, 3/8 ", 0.25mm, stainless steel 1.4401, Ø18x30

Sieve-GS, 1/2 ", 0.25mm, stainless steel 1.4401, Ø20x32

Item number: GSS00123



Sieve-GS, 1/2 ", 0.25mm, stainless steel 1.4401, Ø20x32

Sieve-GS, 3/4 ", 0.25mm, stainless steel 1.4401, Ø25x39

Item number: GSS00124



Sieve-GS, 3/4 ", 0.25mm, stainless steel 1.4401, Ø25x39

Sieve-GS, 1 1/4 ", 0.25mm, stainless steel 1.4401, Ø37x55

Item number: GSS00126



€ 3.20



Sieve-GS, 11/4 ", 0.25mm, stainless steel 1.4401, Ø37x55

Sieve-GS, 11/2 ", 0.25mm, stainless steel 1.4401, Ø43x61

Item number: GSS00127



Sieve-GS, 11/2 ", 0.25mm, stainless steel 1.4401, Ø43x61

Sieve-GS, 2 ", 0.25mm, stainless steel 1.4401, Ø58x76

Item number: GSS00128



Sieve-GS, 2 ", 0.25mm, stainless steel 1.4401, Ø58x76

Sieve-GS, 2 1/2 ", 0.25mm, stainless steel 1.4401, Ø65x90

Item number: GSS00129



Sieve-GS, 2 1/2 ", 0.25mm, stainless steel 1.4401, Ø65x90



Qualität von Anfang an.

Technische Daten

BAUFORM

2-teilige Körperkonstruktion (verschraubt).
Baulänge nach EN 558-1 Reihe 1.

ANSCHLUSS

Flansch DN15 ... DN150, PN16 gebohrt.
Flansche PN16 - DN65 werden in
4-Loch-Ausführung geliefert!

EINBAULAGE

Beliebig, vorzugsweise für waagerechten
oder senkrechten Einbau. Durchflußrichtung
beachten.

DRUCKBEREICH

max. 16bar

TEMPERATURBEREICH

-30°C - max. 120°C bei 16bar
-30°C - max. 200°C bei 13bar

WERKSTOFFE

Gehäuse: Edelstahl 1.4408
Sieb: Edelstahl 1.4401
Dichtung: PTFE

MASCHENWEITE

Normalsieb:
DN15 ... DN50: 1,00mm
DN65 ... DN150: 1,50mm

Feinsieb:
DN15 ... DN150: 0,25mm

Alle Angaben sind freibleibend und
unverbindlich!

Specification

DESIGN

Body consists of two screwed parts. Face to
face length according to EN 558-1 R1.

CONNECTION

Flange DN15 ... DN150, PN16 drilled.
Flansche PN16 - DN65 werden in
4-Loch-Ausführung geliefert!

MOUNTING POSITION

As desired, preferably for horizontal or vertical
mounting. Please refer to flow direction.

PRESSURE RANGE

max. 16bar

TEMPERATURE RANGE

-30°C - max. 120°C at 16bar
-30°C - max. 200°C at 13bar

MATERIAL

Body: Stainless steel 1.4408
Mesh: Stainless steel 1.4401
Sealing: PTFE

MESH

Normal mesh:
DN15 ... DN50: 1,00mm
DN65 ... DN150: 1,50mm

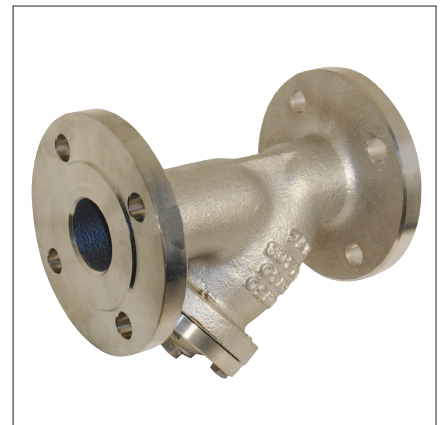
Fine mesh:
DN15 ... DN150: 0,25mm

The above information is intended for guidance
only and the company reserves the right to
change any data herein without prior notice!

Artikel:
KU

Schmutzfänger
PN 16

Edelstahl



Type:
KU

Strainer
PN 16

Stainless Steel



Artikel- u. Bestellangaben: z.B. KU300007

= Schmutzfänger, Edelstahl, Maschenweite = 1,00 mm, DN 50

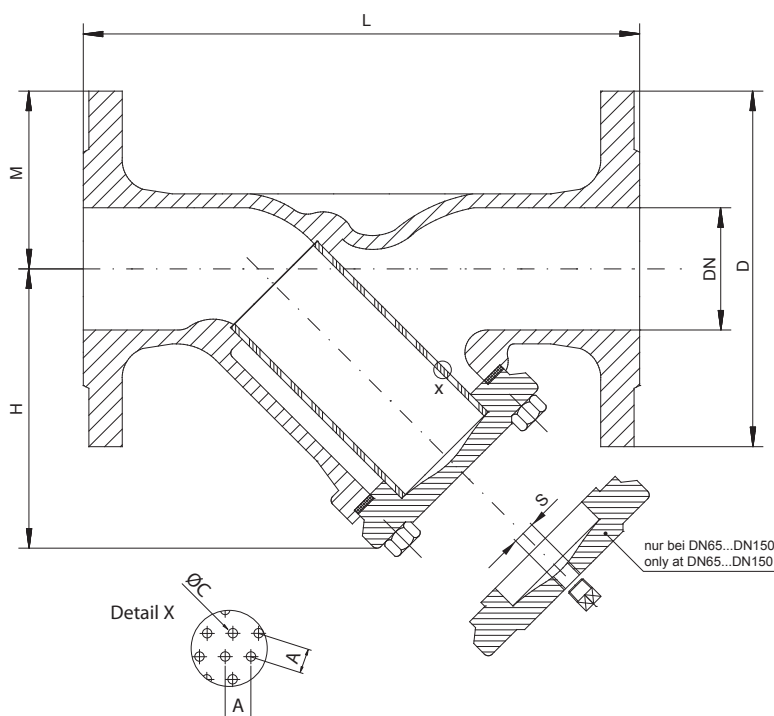
1.+ 2. Stelle Produkt	3.+ 4. Stelle Werkstoffe Gehäuse	5. Stelle Zusatzausstattung	6. Stelle Maschenweite	7.+ 8. Stelle Anschlußgröße	
KU = Schmutzfänger	30 = Edelstahl 1.4408	0 = ohne	0 = 1,00 mm (DN15 - DN50) 1,50 mm (DN65 - DN150) 1 = 0,25 mm (fein)	02 = DN 15 03 = DN 20 04 = DN 25 05 = DN 32 06 = DN 40 07 = DN 50	08 = DN 65 09 = DN 80 10 = DN 100 11 = DN 125 12 = DN 150

Ordering example: e.G. KU300007

= Strainer, Stainless steel, Mesh = 1,00 mm, DN 50

1.+ 2. Digit Product	3.+ 4. Digit Material body	5. Digit Options	6. Digit Mesh	7.+ 8. Digit Connection size	
KU = Strainer	30 = stainl. steel 1.4408	0 = without	0 = 1,00 mm (DN15 - DN50) 1,50 mm (DN65 - DN150) 1 = 0,25 mm (fine)	02 = DN 15 03 = DN 20 04 = DN 25 05 = DN 32 06 = DN 40 07 = DN 50	08 = DN 65 09 = DN 80 10 = DN 100 11 = DN 125 12 = DN 150

**Abmessungen /
Dimension :**



DN	15	20	25	32	40	50	65*	80	100	125	150
L	130	150	160	180	200	230	290	310	350	400	480
D	95	105	115	140	150	165	185	200	220	250	285
M	47,5	52,5	57,5	70	75	82,5	92,5	100	110	125	142,5
H	75	75	100	110	120	140	175	196	244	279	320
ØC1	1	1	1	1	1	1	1,5	1,5	1,5	1,5	1,5
A	2	2	2	2	2	2	2,5	2,5	2,5	2,5	2,5
S	-	-	-	-	-	-	3/8"	3/8"	1/2"	1/2"	1/2"
kg	1,9	3,1	3,4	6,7	6,2	8,5	11,5	16,5	23,4	32,5	42

* Flansche PN16 - DN65 werden in 4-Loch-Ausführung geliefert!
Flanges PN16 - DN65 will be delivered in 4-hole execution!

Hinweis

Bei den in dieser Dokumentation beschriebenen Produkten, in der von uns gelieferten Form, handelt es sich weder um Maschinen gemäß Artikel 2 Absatz a noch um unvollständige Maschinen gemäß Artikel 2 Absatz g im Sinne der Richtlinie 2006/42/EG über Maschinen.

Advice

The products described in this documentation in the conditions of our delivery are no machinery according to annex 2 paragraph a respectively no partly completed machinery according to annex 2 paragraph g of the directive 2006/42/EC on machinery.



**Tabelle: Durchflussmenge / Strömungsgeschwindigkeit
in Abhängigkeit zur Druckdifferenz
beim Schmutzfänger KU**

	DN 80		DN 100		DN 125		DN 150		DN 200		DN 250		DN 300		
Kv-Wert	m ³ /h	144,0	196,7	320,0	468,0	769,0	1108,0	1520,0							
Zeta-Wert	-	3,160	4,140	3,810	3,700	4,330	5,090	5,610							
Sieb	-	Fein	Fein	Fein	Fein	Fein	Fein	Fein							
Δp max.	bar	1,000	1,000	1,000	1,000	1,000	1,000	1,000							
Dichte	kg/m ³	1000,0	1000,0	1000,0	1000,0	1000,0	1000,0	1000,0							
w(max)	m/s	7,956	6,950	7,245	7,352	6,796	6,268	5,971							
Δp		Q [m ³ /h]	w [m/s]	Q [m ³ /h]	w [m/s]	Q [m ³ /h]	w [m/s]	Q [m ³ /h]	w [m/s]	Q [m ³ /h]	w [m/s]	Q [m ³ /h]	w [m/s]	Q [m ³ /h]	w [m/s]
0,01	bar	14,400	0,796	19,670	0,695	32,000	0,725	46,800	0,735	76,900	0,680	110,800	0,627	152,000	0,597
0,02	bar	20,365	1,125	27,818	0,983	45,255	1,025	66,185	1,040	108,753	0,961	156,695	0,886	214,960	0,844
0,03	bar	24,942	1,378	34,064	1,204	55,426	1,255	81,060	1,273	133,195	1,177	191,911	1,086	263,272	1,034
0,04	bar	28,800	1,591	39,340	1,390	64,000	1,449	93,600	1,470	153,800	1,359	221,600	1,254	304,000	1,194
0,05	bar	32,199	1,779	43,983	1,554	71,554	1,620	104,648	1,644	171,954	1,520	247,756	1,402	339,882	1,335
0,06	bar	35,273	1,949	48,181	1,703	78,384	1,775	114,636	1,801	188,366	1,665	271,403	1,535	372,322	1,463
0,07	bar	38,099	2,105	52,042	1,839	84,664	1,917	123,821	1,945	203,458	1,798	293,149	1,658	402,154	1,580
0,08	bar	40,279	2,250	55,635	1,966	90,510	2,049	132,370	2,080	217,506	1,922	313,390	1,773	429,921	1,689
0,09	bar	43,200	2,387	59,010	2,085	96,000	2,174	140,400	2,206	230,700	2,039	332,400	1,881	456,000	1,791
0,10	bar	45,537	2,516	62,202	2,198	101,193	2,291	147,995	2,325	243,179	2,149	350,380	1,982	480,666	1,888
0,20	bar	64,399	3,558	87,967	3,108	143,108	3,240	209,296	3,288	343,907	3,039	495,513	2,803	679,765	2,670
0,30	bar	78,782	4,357	107,737	3,807	175,271	3,968	256,334	4,027	421,199	3,722	606,877	3,433	832,538	3,270
0,40	bar	91,074	5,032	124,404	4,396	202,386	4,582	295,989	4,650	486,358	4,298	700,761	3,964	961,332	3,776
0,50	bar	101,823	5,625	139,088	4,915	226,274	5,123	330,926	5,199	453,765	4,806	783,474	4,432	1074,802	4,222
0,60	bar	111,542	6,162	152,363	5,384	247,871	5,612	362,511	5,695	595,665	5,264	858,253	4,855	1177,387	4,625
0,70	bar	120,479	6,656	164,571	5,815	267,731	6,062	391,557	6,151	643,392	5,686	927,019	5,245	1271,723	4,996
0,80	bar	128,798	7,116	175,934	6,217	286,217	6,480	418,592	6,576	687,815	6,079	991,025	5,607	1359,529	5,340
0,90	bar	136,610	7,547	186,606	6,594	303,579	6,873	443,984	6,975	729,537	6,448	1051,141	5,947	1441,999	5,664
1,00	bar	144,000	7,956	196,700	6,950	320,000	7,245	461,000	7,352	769,000	6,796	1108,000	6,268	1520,000	5,971
1,10	bar	151,028	8,344	206,301	7,290	335,169	7,599	490,843	7,711	806,534	7,128	1162,080	6,574	1594,189	6,262
1,20	bar	157,744	8,715	215,474	7,614	350,542	7,937	512,668	8,054	842,397	7,445	12,13,753	6,867	1665,077	6,541
1,30	bar	164,185	9,071	224,273	7,925	364,856	8,261	533,602	8,393	876,795	7,749	1263,314	7,147	1733,067	6,808
1,40	bar	170,383	9,413	232,739	8,224	378,629	8,573	553,745	8,699	909,893	8,041	1311,003	7,417	1798,488	7,065
1,50	bar	176,363	9,744	240,907	8,513	391,918	8,874	573,181	9,005	941,829	8,324	1357,017	7,677	1861,612	7,313
1,60	bar	182,147	10,063	248,808	8,792	404,772	9,165	591,978	9,300	972,717	8,597	1401,521	7,929	1922,665	7,553

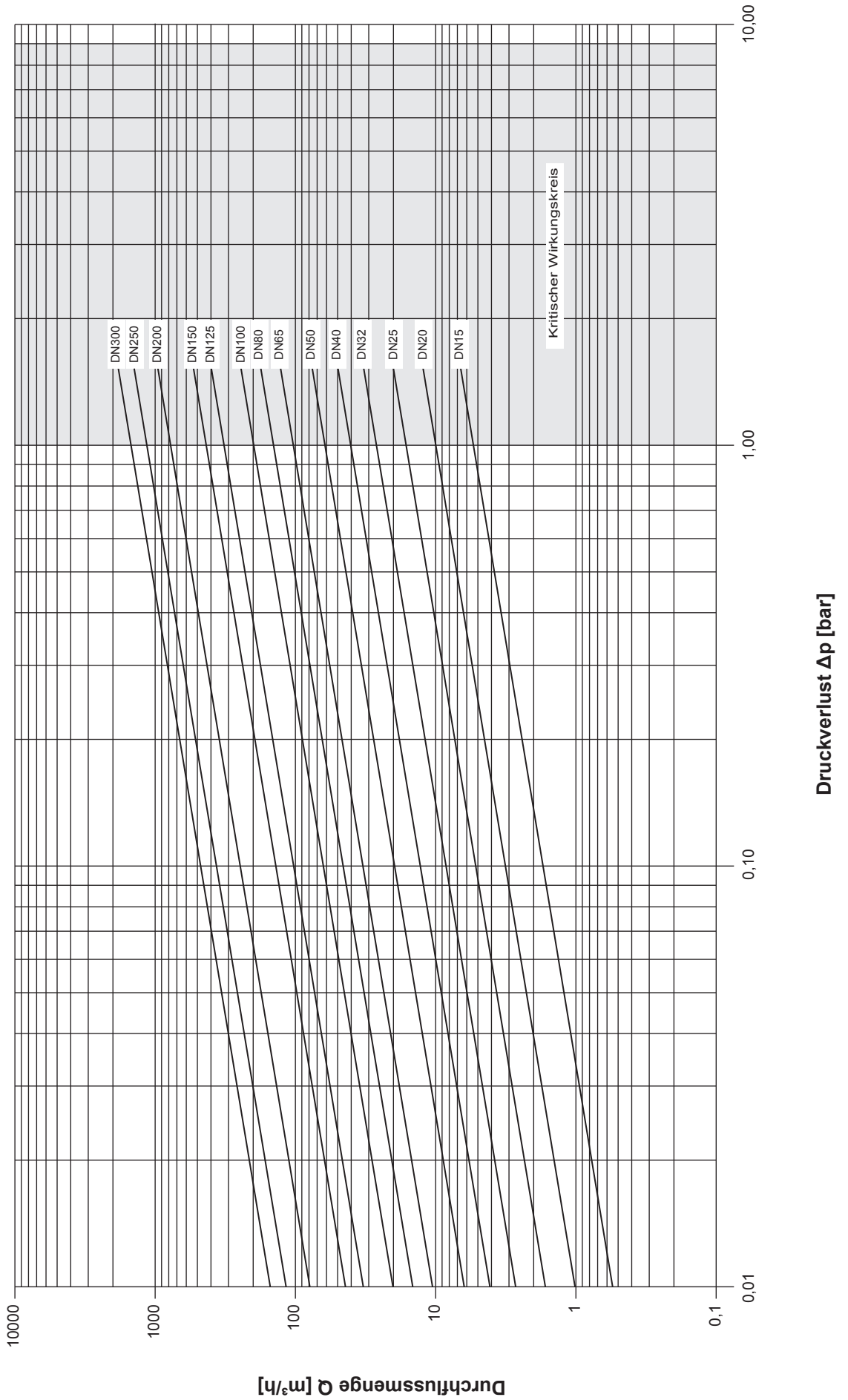


**Tabelle: Durchflussmenge / Strömungsgeschwindigkeit
in Abhängigkeit zur Druckdifferenz
beim Schmutzfänger KU**

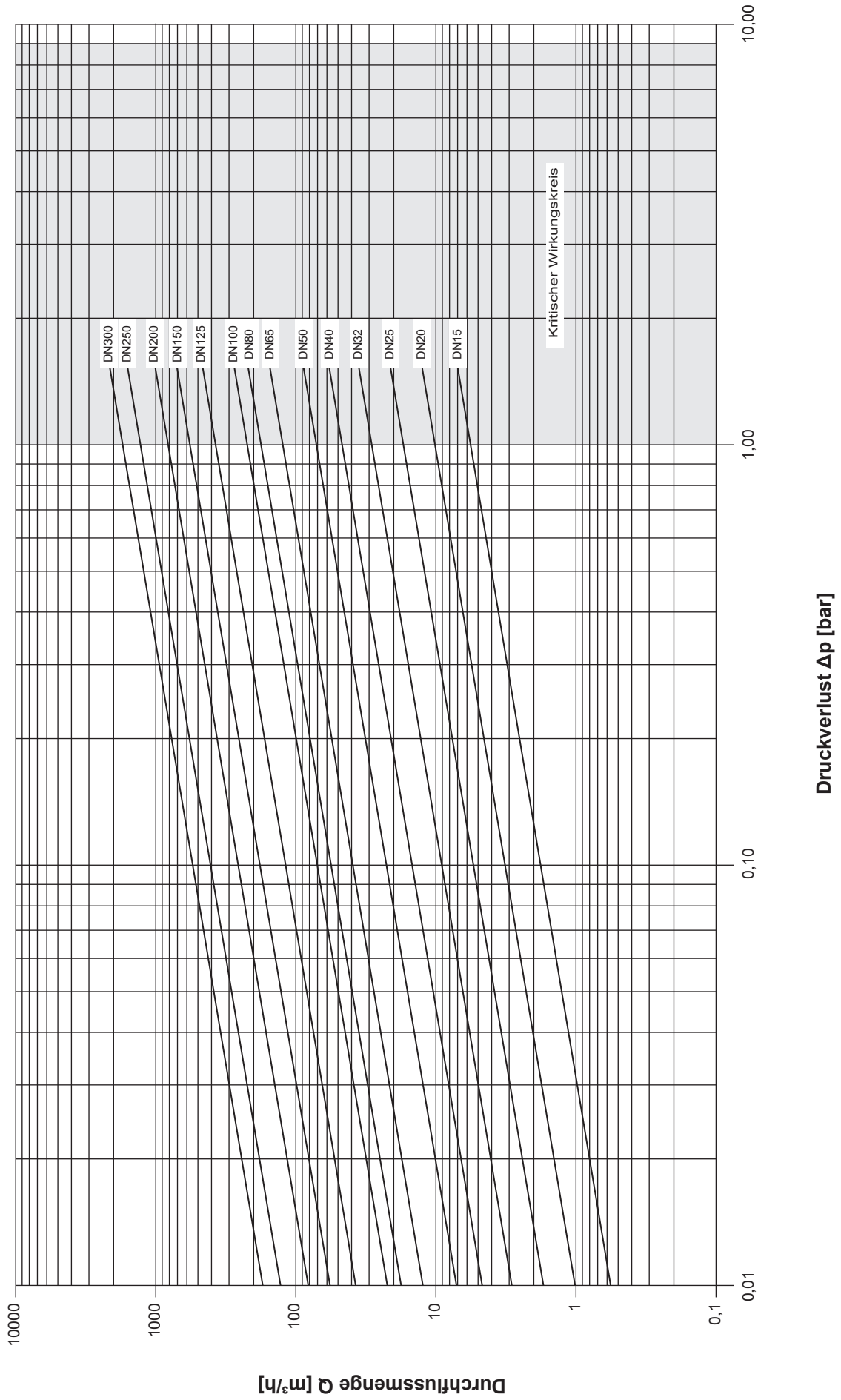
	DN 80	DN 100	DN 125	DN 150	DN 200	DN 250	DN 300							
Kv-Wert	173,5	217,5	364,4	537,0	820,0	1260,0	1735,0							
Zeta-Wert	2,18	3,38	2,94	2,81	3,81	3,94	4,31							
Sieb	Normal	Normal	Normal	Normal	Normal	Normal	Normal							
Δp max.	1,000	1,000	1,000	1,000	1,000	1,000	1,000							
Dichte	1000,0	1000,0	1000,0	1000,0	1000,0	1000,0	1000,0							
w(max)	9,578	7,692	8,248	8,436	7,245	7,125	6,812							
Δp	Q [m³/h]	w [m/s]	Q [m³/h]	w [m/s]	Q [m³/h]	w [m/s]	Q [m³/h]	w [m/s]						
0,01	17,350	0,958	21,750	0,769	36,440	0,825	53,700	0,844	82,000	0,725	126,000	0,712	173,500	0,681
0,02	24,537	1,355	30,759	1,088	51,534	1,166	75,943	1,193	115,966	1,025	178,191	1,008	245,366	0,963
0,03	30,051	1,659	37,672	1,332	63,116	1,429	93,011	1,461	142,028	1,225	218,238	1,234	300,511	1,180
0,04	34,700	1,916	43,500	1,538	72,880	1,650	107,400	1,687	164,000	1,449	252,000	1,425	347,000	1,362
0,05	38,796	2,142	48,634	1,720	81,482	1,844	120,077	1,886	183,358	1,620	281,745	1,593	387,958	1,523
0,06	42,499	2,346	53,276	1,884	89,259	2,020	131,538	2,067	200,858	1,775	308,636	1,745	424,986	1,669
0,07	45,904	2,534	57,545	2,035	96,411	2,182	142,077	2,232	216,952	1,917	333,365	1,885	459,038	1,802
0,08	49,073	2,709	61,518	2,176	103,068	2,333	151,887	2,386	231,931	2,049	356,382	2,015	490,732	1,927
0,09	52,050	2,873	65,250	2,308	109,068	2,474	161,100	2,531	246,000	2,174	378,000	2,137	520,500	2,044
0,10	54,866	3,029	68,780	2,433	115,233	2,608	169,814	2,668	259,307	2,291	398,447	2,253	548,655	2,154
0,20	77,592	4,284	97,269	3,440	162,965	3,689	240,154	3,773	366,715	3,240	563,489	3,186	775,916	3,046
0,30	95,030	5,246	119,130	4,213	199,590	4,518	294,127	4,621	449,132	3,968	690,130	3,902	950,299	3,731
0,40	109,731	6,058	137,559	4,865	230,467	5,216	339,629	5,336	518,614	4,582	796,894	4,506	1097,310	4,308
0,50	122,683	6,773	153,796	5,439	257,670	5,832	379,716	5,965	579,828	5,123	890,955	5,038	1226,830	4,817
0,60	134,393	7,419	168,475	5,958	282,263	6,389	415,958	6,535	635,169	5,612	975,992	5,519	1343,925	5,277
0,70	145,161	8,014	181,974	6,436	304,879	6,901	449,286	7,058	686,061	6,062	1054,192	5,691	1451,605	5,699
0,80	155,183	8,567	194,538	6,880	325,929	7,377	480,307	7,546	733,430	6,480	1126,978	6,373	1551,831	6,093
0,90	164,597	9,087	206,339	7,298	345,700	7,825	509,443	8,004	777,920	6,873	1195,341	6,759	1645,966	6,462
1,00	173,500	9,578	217,500	7,692	364,400	8,248	537,000	8,436	820,000	7,245	1260,000	7,125	1735,000	6,812
1,10	181,698	10,046	228,116	8,068	382,186	8,650	563,210	8,848	860,023	7,599	1321,499	7,472	1819,683	7,145
1,20	190,060	10,492	238,259	8,427	399,180	9,035	588,254	9,242	898,265	7,937	1380,261	7,805	1900,597	7,462
1,30	197,820	10,921	247,998	8,771	415,480	9,404	612,274	9,619	934,944	8,261	1436,621	8,123	1978,204	7,767
1,40	205,288	11,333	257,349	9,102	431,164	9,759	635,387	9,982	970,237	8,573	1490,852	8,430	2052,880	8,060
1,50	212,493	11,731	266,382	9,421	446,297	10,102	657,688	10,333	1004,291	8,874	1543,179	8,726	2124,932	8,343
1,60	219,432	12,116	275,118	9,730	460,934	10,433	679,257	10,671	1037,227	9,165	1593,788	9,012	2194,621	8,617



Leistungsdiagramm für Schmutzfänger mit Fein-Sieb und Wasser



Leistungsdiagramm für Schmutzfänger mit Normal-Sieb und Wasser



KUD



Head gasket for strainer KU, DN15, PTFE

Item number: KUD10002

Head gasket for strainer KU, DN15, PTFE



Head gasket for strainer KU, DN20, PTFE

Item number: KUD10003

Head gasket for strainer KU, DN20, PTFE



Head gasket for strainer KU, DN25, PTFE

Item number: KUD10004

Head gasket for strainer KU, DN25, PTFE



Head gasket for strainer KU, DN32, PTFE

Item number: KUD10005

Head gasket for strainer KU, DN32, PTFE



Head gasket for strainer KU, DN40, PTFE

Item number: KUD10006

Head gasket for strainer KU, DN40, PTFE



Head gasket for strainer KU, DN50, PTFE

Item number: KUD10007

Head gasket for strainer KU, DN50, PTFE



Head gasket for strainer KU, DN65, PTFE

Item number: KUD10008

Head gasket for strainer KU, DN65, PTFE



Head gasket for strainer KU, DN80, PTFE

Item number: KUD10009

Head gasket for strainer KU, DN80, PTFE



Head gasket for strainer KU, DN100, PTFE

Item number: KUD10010

Head gasket for strainer KU, DN100, PTFE



Head gasket for strainer KU, DN125, PTFE

Item number: KUD10011

Head gasket for strainer KU, DN125, PTFE



Head gasket for strainer KU, DN150, PTFE

Item number: KUD10012

Head gasket for strainer KU, DN150, PTFE

KUS



Strainer strainer KU3000-DN15 and DN20, mesh size 1mm

Item number: KUS00102



Strainer strainer KU3000-DN15 and DN20
mesh size 1mm



Sieve-KU, DN25, 1mm, stainless steel

Item number: KUS00104



Sieve-KU, DN25, 1mm, stainless steel



Sieve-KU, DN32 + DN40, 1mm, stainless steel

Item number: KUS00105



Sieve-KU, DN32 + DN40, 1mm, stainless steel



Sieve-KU, DN50, 1mm, stainless steel

Item number: KUS00107



Sieve-KU, DN50, 1mm, stainless steel

Sieve-KU, DN65, 1.5mm, stainless steel

Item number: KUS00108





Sieve-KU, DN65, 1.5mm, stainless steel



Sieve-KU, DN80, 1.5mm, stainless steel, Ø83mm, height: 133mm

Item number: KUS00109



Sieve-KU, DN80, 1.5mm, stainless steel
Ø83mm, height: 133mm



Sieve-KU, DN100, 1.5mm, stainless steel

Item number: KUS00110



Sieve-KU, DN100, 1.5mm, stainless steel



Sieve-KU, DN15 + DN20, 0.25mm, stainless steel

Item number: KUS00202



Sieve-KU, DN15 + DN20, 0.25mm, stainless steel



Sieve-KU, DN25, 0.25mm, stainless steel

Item number: KUS00204



Sieb-KU, DN25, 0.25mm, Edelstahl



Sieb-KU, DN32+DN40, 0.25mm, Edelstahl

Artikelnummer: KUS00205



Sieb-KU, DN32+DN40, 0.25mm, Edelstahl



Sieb-KU, DN50, 0.25mm, Edelstahl

Artikelnummer: KUS00207



Sieb-KU, DN50, 0.25mm, Edelstahl



Sieb-KU, DN65, 0.25mm, Edelstahl

Artikelnummer: KUS00208



Sieb-KU, DN65, 0.25mm, Edelstahl



Sieb-KU, DN80, 0.25mm, Edelstahl

Artikelnummer: KUS00209



Sieb-KU, DN80, 0.25mm, Edelstahl



Sieve-KU, DN100, 0.25mm, stainless steel

Item number: KUS00210



Sieve-KU, DN100, 0.25mm, stainless steel

По вопросам продаж и поддержки обращайтесь:

Алматы (7273)495-231	Казань (843)206-01-48	Новокузнецк (3843)20-46-81	Смоленск (4812)29-41-54
Архангельск (8182)63-90-72	Калининград (4012)72-03-81	Новосибирск (383)227-86-73	Сочи (862)225-72-31
Астрахань (8512)99-46-04	Калуга (4842)92-23-67	Омск (3812)21-46-40	Ставрополь (8652)20-65-13
Барнаул (3852)73-04-60	Кемерово (3842)65-04-62	Орел (4862)44-53-42	Сургут (3462)77-98-35
Белгород (4722)40-23-64	Киров (8332)68-02-04	Оренбург (3532)37-68-04	Тверь (4822)63-31-35
Брянск (4832)59-03-52	Краснодар (861)203-40-90	Пенза (8412)22-31-16	Томск (3822)98-41-53
Владивосток (423)249-28-31	Красноярск (391)204-63-61	Пермь (342)205-81-47	Тула (4872)74-02-29
Волгоград (844)278-03-48	Курск (4712)77-13-04	Ростов-на-Дону (863)308-18-15	Тюмень (3452)66-21-18
Вологда (8172)26-41-59	Липецк (4742)52-20-81	Рязань (4912)46-61-64	Ульяновск (8422)24-23-59
Воронеж (473)204-51-73	Магнитогорск (3519)55-03-13	Самара (846)206-03-16	Уфа (347)229-48-12
Екатеринбург (343)384-55-89	Москва (495)268-04-70	Санкт-Петербург (812)309-46-40	Хабаровск (4212)92-98-04
Иваново (4932)77-34-06	Мурманск (8152)59-64-93	Саратов (845)249-38-78	Челябинск (351)202-03-61
Ижевск (3412)26-03-58	Набережные Челны (8552)20-53-41	Севастополь (8692)22-31-93	Череповец (8202)49-02-64
Иркутск (395)279-98-46	Нижний Новгород (831)429-08-12	Симферополь (3652)67-13-56	Ярославль (4852)69-52-93
Россия (495)268-04-70	Киргизия (996)312-96-26-47	Казахстан (7172)727-132	

Эл. почта efg@nt-rt.ru || Сайт: <https://end.nt-rt.ru/>